

THE UNIVERSITY *of* MONTANA WESTERN

CHANCELLOR
Michael L. Reid

Hillary Lowell
Assistant to the Chancellor

**PROVOST & VICE
CHANCELLOR**
*Academic
Affairs*
Dr. Johnny MacLean

- Academic Affairs
- Institutional Technology
- Student Success
- School of Outreach
- Library Services
- Registrar
- Admissions

VICE CHANCELLOR
*Administration &
Finance*
Tricia Fiscus

- Student Affairs
- Auxiliary Operations
- Human Resources
- Business & Campus Services
- Financial Aid
- Facilities

DIRECTOR
*University
Communications*
Matt Raffety

- Internal & External Communications
- Website Content Management
- Graphic Design/Printing
- Branding
- Public Relations
- Social Media

**FOUNDATION
DIRECTOR**
*Development &
Alumni Relations*
Roxanne Engellant

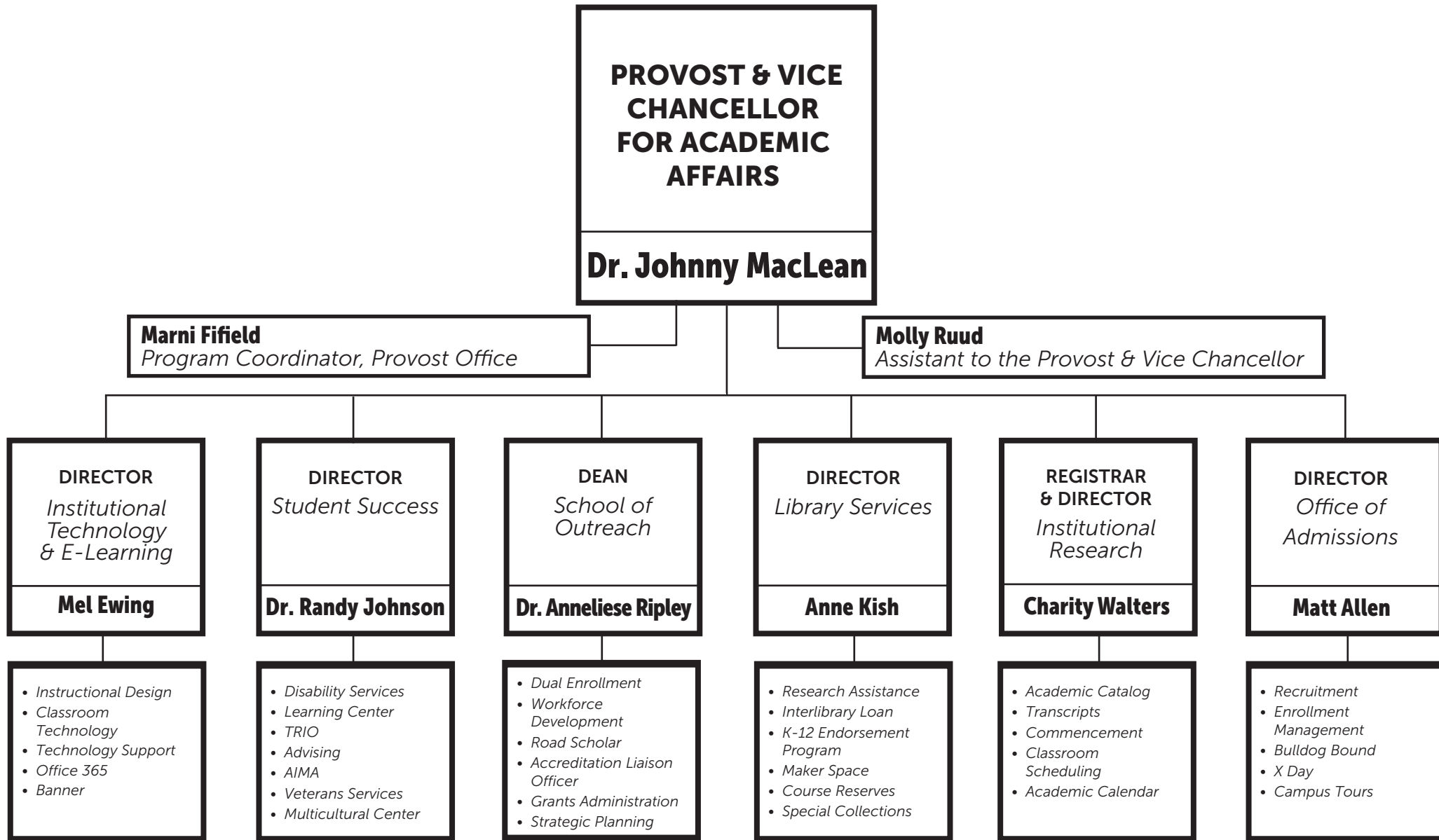
- Advancement
- Fund for Experience One
- Scholarships
- Alumni & Friends
- Events

DIRECTOR
Athletics
Michael Feuling

- Student-Athlete Support
- NAIA Champions of Character
- Bulldog Club
- Association of Student Athletes
- Frontier Conference

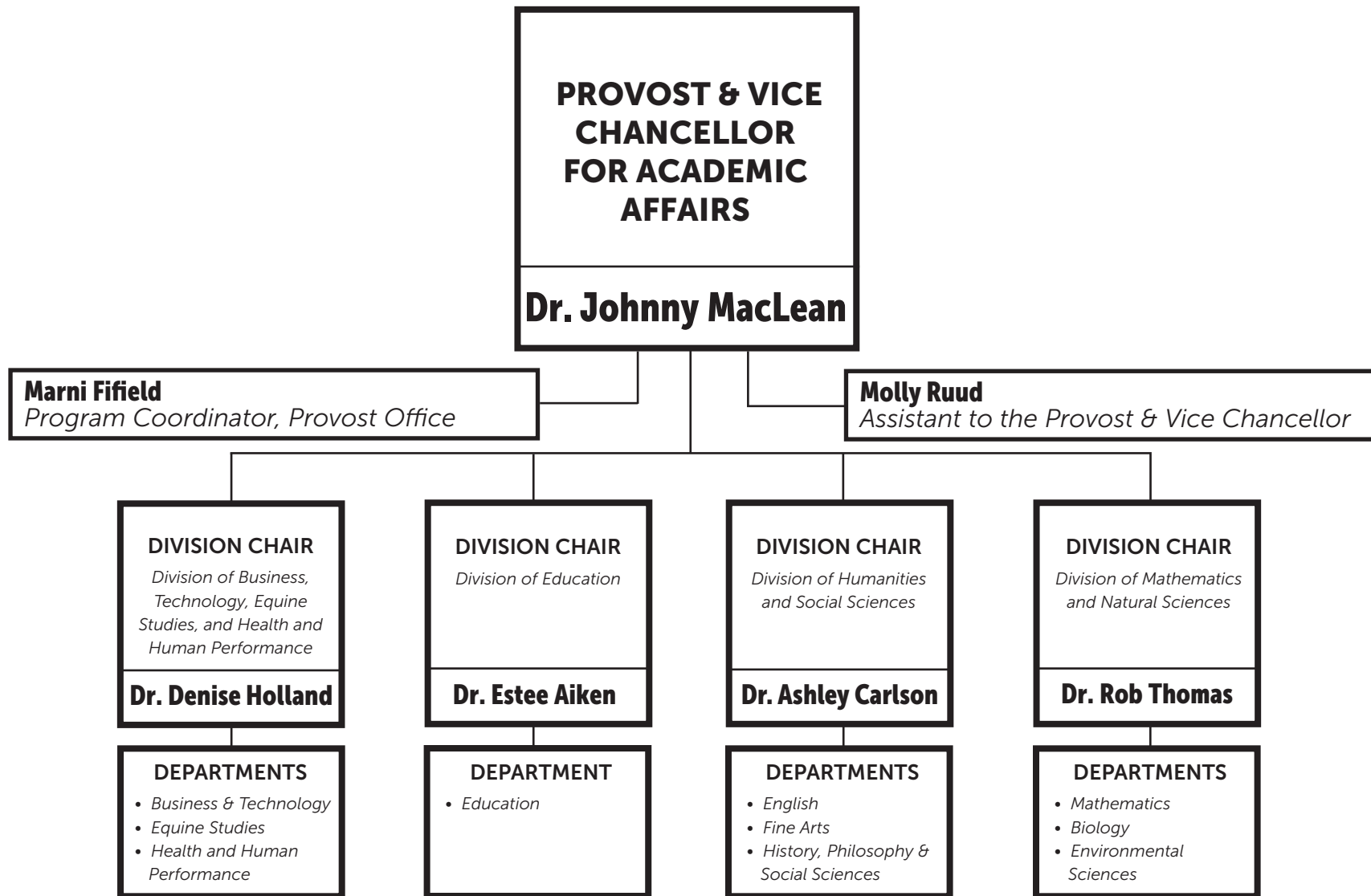
THE UNIVERSITY *of* MONTANA WESTERN

ADMINISTRATIVE STRUCTURE



THE UNIVERSITY *of* MONTANA WESTERN

ACADEMIC STRUCTURE



THE UNIVERSITY *of* MONTANA WESTERN

VICE CHANCELLOR

*Administration &
Finance*

Tricia Fiscus

DEAN OF STUDENT AFFAIRS

Nicole Hazelbaker

SENIOR DIRECTOR OF AUXILIARY SERVICES

Mike Piazzola

- *Counseling*
- *Student Government*
- *Safety & Security*
- *Wellness*
- *Student Conduct*
- *ADA*
- *Clery*
- *Title IX*
- *Student Health Insurance*
- *EverFi*

- *Residence Life*
- *Dining Services*
- *Conference & Events*
- *Orientation*
- *Bulldog Card*
- *Birch Creek Center*
- *Vending*

PERSONNEL OFFICER

Patti Lake

- *Administration & Finance*
- *Human Resources*
- *Benefits*
- *EEOC*
- *Hiring*
- *Performance Management*

PAYROLL & BENEFITS SUPERVISOR

Lori Broksle

- *Payroll*
- *Benefits*
- *Human Resources*

DIRECTOR *Business & Campus Services*

Debi Richardson

- *Tuition & Fees*
- *Budget*
- *Travel*
- *Mail Room*
- *Parking*
- *Purchasing*
- *Grant Management*
- *Bookstore*

DIRECTOR *Financial Aid*

Louise Driver

- *Work Study*
- *FAFSA*
- *Scholarships*
- *Loans*
- *Grants*
- *WUE*
- *Waivers*

DIRECTOR *Facilities*

Michael Brown

- *Grounds*
- *Custodial*
- *Maintenance*
- *Construction*
- *Building Access*
- *Motor Pool*